

HIGH SCHOOL EXCURSIONS

Conservation through education



NOTES



ABOUT US



Located off the Pacific Highway at Port Macquarie, Billabong Zoo cares for over 200 animals of 100 species throughout its 10 acre wildlife park, set in beautiful spacious gardens with koi ponds.

Billabong Zoo's school excursion programmes are specifically tailored to meet the needs of teachers, the school curriculum and level of your students. We offer an ideal learning environment and active experience with self-guided, interactive and subject-tailored options available.

We look forward to welcoming you and your students to visit us here at Billabong Zoo in Port Macquarie.

SELF-GUIDED VISITS

Bring your students to explore Billabong Zoo at your own pace and encourage your students to experience our amazing animal ambassadors and range of habitats, supported by our educational and entertaining daily zoo keeper talks.

Self-guided excursions at Billabong Zoo give you the freedom and flexibility to develop your own journey, focusing on the animals, habitats and ecosystems to suit your students and interests and to align with learnings that have been taking place within the classroom. Billabong Zoo is the ultimate destination for a wild educational excursion not soon to be forgotten.

Billabong Zoo is an inclusive and accessible site, catering for all students to enjoy and learn.



INTERACTIVE VISITS

Explore all that Billabong Zoo has to offer. Complete with a personalised zoo keeper presentation, tactile experiences and animal encounters, your students will get more out of one of our Interactive Excursions.

Billabong Zoo offers your students interactive learning opportunities that enable all ages and learning styles to engage with wildlife, develop a deeper understanding of conservation, and expand their knowledge of the natural world. Teachers can be provided curriculum-linked resources prior to their visit to further enhance the learning experience before, during and after their excursion.

Billabong Zoo is an inclusive and accessible site, catering for all students to enjoy and learn.



INTERACTIVE VISITS

In order to provide your students with both a memorable and educationally rewarding experience, please find the following schedule for your upcoming Interactive Visit at Billabong Zoo.

10.15 ● ARRIVAL

- Arrive at Billabong Zoo
- Be welcomed by our friendly Zoo team
- Shown bathroom, first aid and waste facilities
- Students lead to gazebo area

10.30 ● MORNING TEA

- Break for morning tea
- Students are to stay in gazebo area unless escorted by teacher

11.00 ● KEEPER PRESENTATION

- Introduction from Billabong Zoo keeper
- Rules and safety induction to students
- Private 45 minute interactive presentation by keeper with animals
- Opportunity for students to have Q&A session

11:45 ● TEACHER-GUIDED TOUR

- Teacher use provided maps for teacher-guided tours

Warperer Group (A) Tour:

- includes Shrek the Croc, Little Monkeys, Spider Monkeys, Koalas, Feed the Roos, Red Pandas, Snow Leopard, Lions, and Cheetahs

Dungen Group (B) Tour:

- includes Reptile House, Cassowaries, Possums, Echidnas, Quolls, Wombats, Meerkats, Dingoes, Fennec Foxes, Emus and Bird Aeries

INTERACTIVE VISITS

(CONTINUED)

12.30 ● LUNCH

Groups meet back at the gazebo for lunch

Students are to stay in gazebo area unless escorted by teacher

1.00 ● TEACHER-GUIDED TOUR

Students complete the second tour route

Warperer Group (A) Tour:

includes Shrek the Croc, Little Monkeys, Spider Monkeys, Koalas,
Feed the Roos, Red Pandas, Snow Leopard, Lions, and Cheetahs

Dungen Group (B) Tour:

includes Reptile House, Cassowaries, Possums, Echidnas, Quolls,
Wombats, Meerkats, Dingoes, Fennec Foxes, Emus and Bird Aeries

1.45 ● PREPARE FOR DEPARTURE

Groups meet back at the gazebo

Clean and tidy all rubbish

Allow time for students to use bathroom

Collect belongings

Some schools may allow students to purchase from gift shop

2.00 ● DEPARTURE

Students are lead back through entrance

Depart

HIGH SCHOOL SCIENCE FOCUS

STAGE 4

Creature Classification

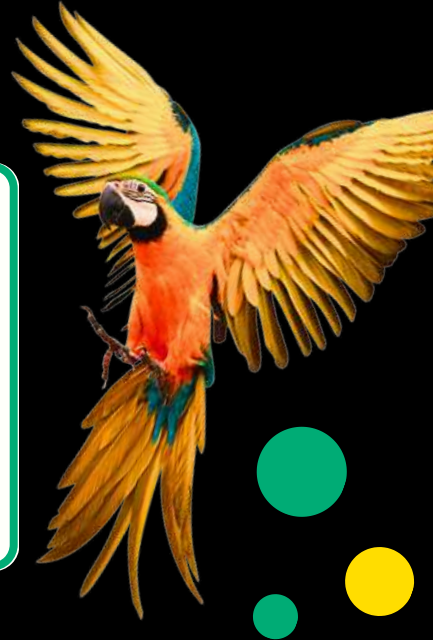
(SC4-14LW, SC4-1VA, SC4-4WS)

Students investigate why classification is important and how scientists and zoologists group and classify living things, drawing connections between different animal groups.

Food Webs

(SC4-7WS, SC4-8WS, SC4-9WS)

Students learn about ecosystems and find out more about how plants and animals within an ecosystem interact, and how human interaction affects these precious balances, and conservation efforts to protect them.



STAGE 5

Animal Welfare and Conservation

(AG5-4, AG5-5)

Students explore how biodiversity is achieved through reproduction and heredity and how keepers at Billabong Zoo's world-renowned Koala Breeding Centre ensure successful breeding and inheritance patterns.

Wonders of Life

(SC4-6WS, SC5-14LW, SC5-15LW)

students gain an understanding of how the structure of living things relates to the functions that systems perform, how these features adapt and aid a species survival.

STAGE 6

Genetics & Heredity

(BIO12-12A, BIO13A, BIO11/12-5, BIO11/12-7)

Students explore how biodiversity is achieved through reproduction and heredity and how keepers at Billabong Zoo's world-renowned Koala Breeding Centre ensure successful breeding and inheritance patterns.

Biological Diversity

(BIO11-10, BIO11/12-1, BIO11/12-5, BIO11/12-7)

students investigate different types of adaptations and the relationships between organisms in terms of specialisation, using a selection of Australian and exotic species at Billabong Zoo as examples.



HIGH SCHOOL OTHER SUBJECTS

VET COURSES

Active Volunteering

(CHC14015)

Business Studies

(BSB30120)

Hospitality

(SIT10222)

Retail

(SIR10116)

Tourism

(SIT10122)

Tourism, Travel & Events

(SIT30122, SIT30222, SIT30522)



MATHS

Koala-culations

Students work this keepers and learn how to calculate daily diets, track animal weight, design enclosures and locate and apply measurement skills needed to navigate the Zoo.

Monkey Maths

students observe our beloved Black-handed Spider Monkeys to collect their data and then chart, graph and table this information.



HSIE

Tourism: Wild Economics

Students explore global tourism, and use Billabong Zoo as a case study as an example of an Economic Enterprise within the Tourism Industry.

Exploring Human Connections with Big Cats

Take a trip deep into the heart of Africa and learn about the diverse habitats and fauna of Africa and the threats these mighty animals face in the wild.



INCLUSIONS & PRICING

INTERACTIVE VISITS

\$24
PER STUDENT

Zoo Entry

Personal 45 minute zoo keeper demonstration

Unique zoo keeper Q&A session

Tactile experience

Curriculum linked worksheets

Self-guided exploration time

Kangaroo food for our Macropod Meadow

SELF-GUIDED VISITS

\$21
PER STUDENT

Zoo Entry

Fully self-guided exploration of Billabong Zoo

Minimum 15 students required to book
Teacher to student ratio 1:15 | Additional adults \$32pp



ZOO KEEPER WORKSHOPS

With our Zoo Keeper Workshops, your students will gain hands-on experience as they are guided by one of Billabong Zoo's fun and knowledgeable keepers, guiding through workshop activities such as food preparation and specific diets of animals, creating enrichments to teach animals how to forage for food and assist in training regiments of some of our exotic species.

Learn to care and protect for our amazing animals, whilst being able to get up close and personal to many of the species we have here at the zoo.

Half-Day and Full-Day Workshops available.

Contact Billabong Zoo for pricing and availability.



**Billabong Zoo is an inclusive and accessible site,
catering for all students to enjoy and learn.**

SCAN
QR CODE



ENQUIRIES & BOOKINGS

Enquire or book your school excursion online now at:
<https://www.billabongzoo.com.au/visitors/school-excursions>
or scan the QR code above to enquire directly from your phone.

For additional information email
admin@billabongkoala.com.au

